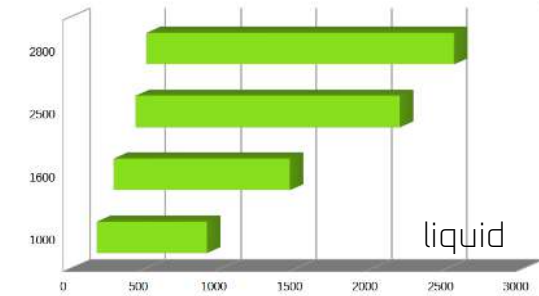
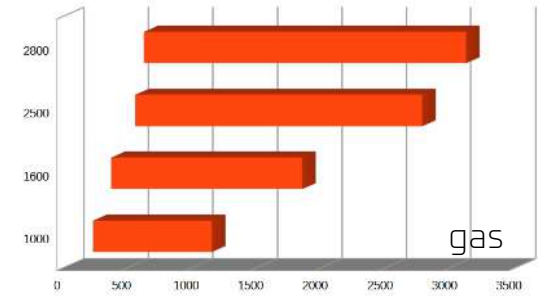
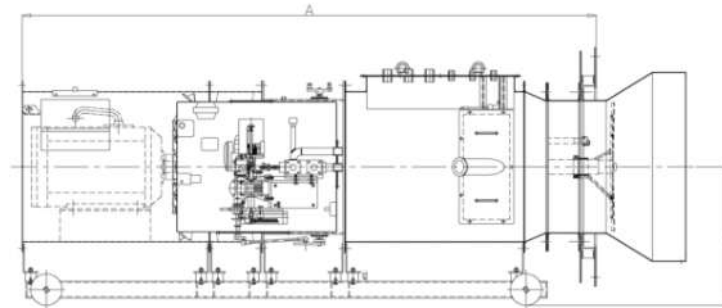
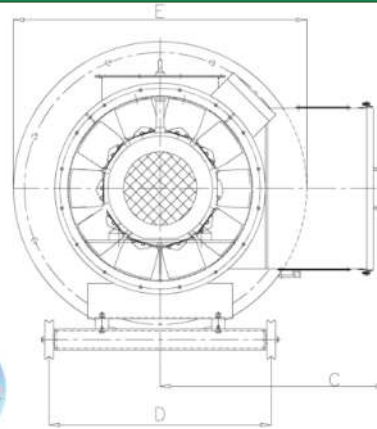




AX is an old fashion design burner, improved to today market requests.
 Suitable for different fuels (oil and gas), today this burner efficiency can be improved with new fan layout.
 Ideal solution in case of vacuum combustion chamber.

Low fan capacity requested compared to the other models.
 Pneu-Tronic® pneumatic pulverization in case of liquid fuels.
 2 fuels solution (gas+liquid) available with immediate fuel conversion switch

- 7% yearly fuel save with regular maintenance
- 5% better efficiency
- NOx emission reduction
- Better combustion



AX

All technical datas are subject to change without notice due to technical improvements

technical datas		MIN		MAX		fan capacity		dimensions [mm]					gas fuel [Nm³/h]		liquid fuel [kg/h]	
		MW	10 ⁶ Kcal	MW	10 ⁶ Kcal	Volt	kw	A	B	C	D	E	min	max	min	max
		AX 1000	2,22	1,91	11,10	9,55	400	18,5	2784	658	884,5	858	710	230	1150	182
AX 1600	3,57	3,07	17,86	15,36	400	30	2692	658	884,5	858	930	370	1850	292	1460	
AX 2500	5,37	4,62	26,84	23,08	400	37	2697	658	884,5	858	1010	556	2780	438	2190	
AX 2800	6,02	5,18	30,12	25,90	400	37	2727	658	884,5	858	1135	624	3120	510	2550	



Casiraghi
Burners
System



AX

AXIAL BURNER

UP TO 30,1 MW